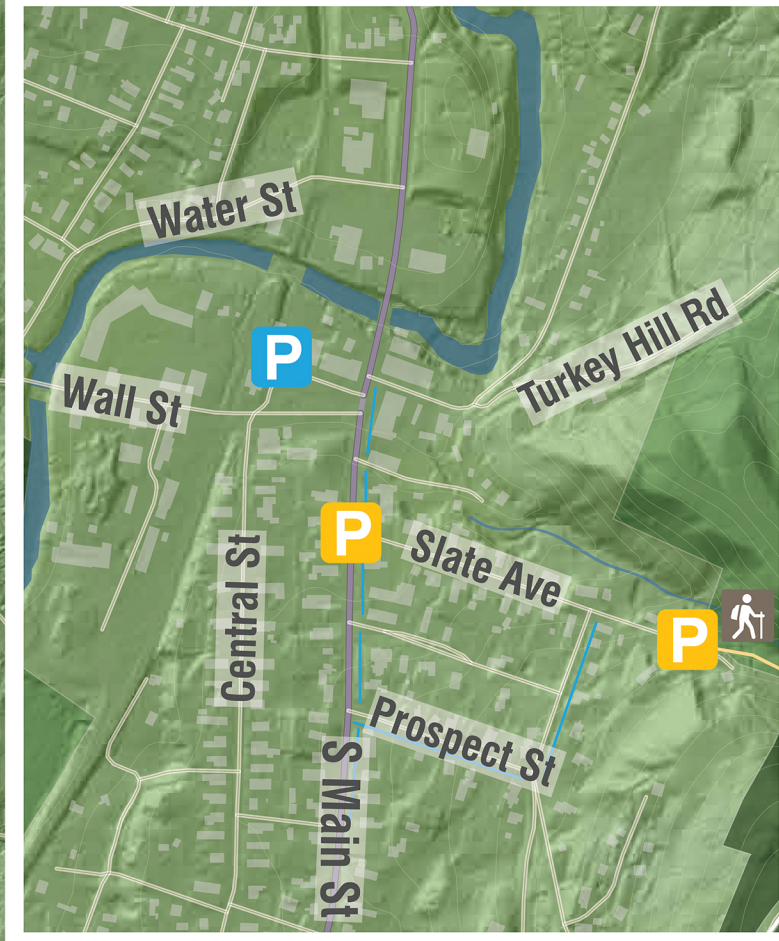




MAIN ST PARKING AREAS



LEGEND

- YOU ARE HERE**
- Trails
 - Paine Mountain Trail
 - Playground
 - Quarry
 - Trail Access
 - Parking Areas
 - Roadside Parking
 - Limited Parking*
 - No Parking
 - Local Roads
 - State Roads
 - I-89
 - Swimming Pool
 - Cheney Field
 - Shaw Center
 - Summit

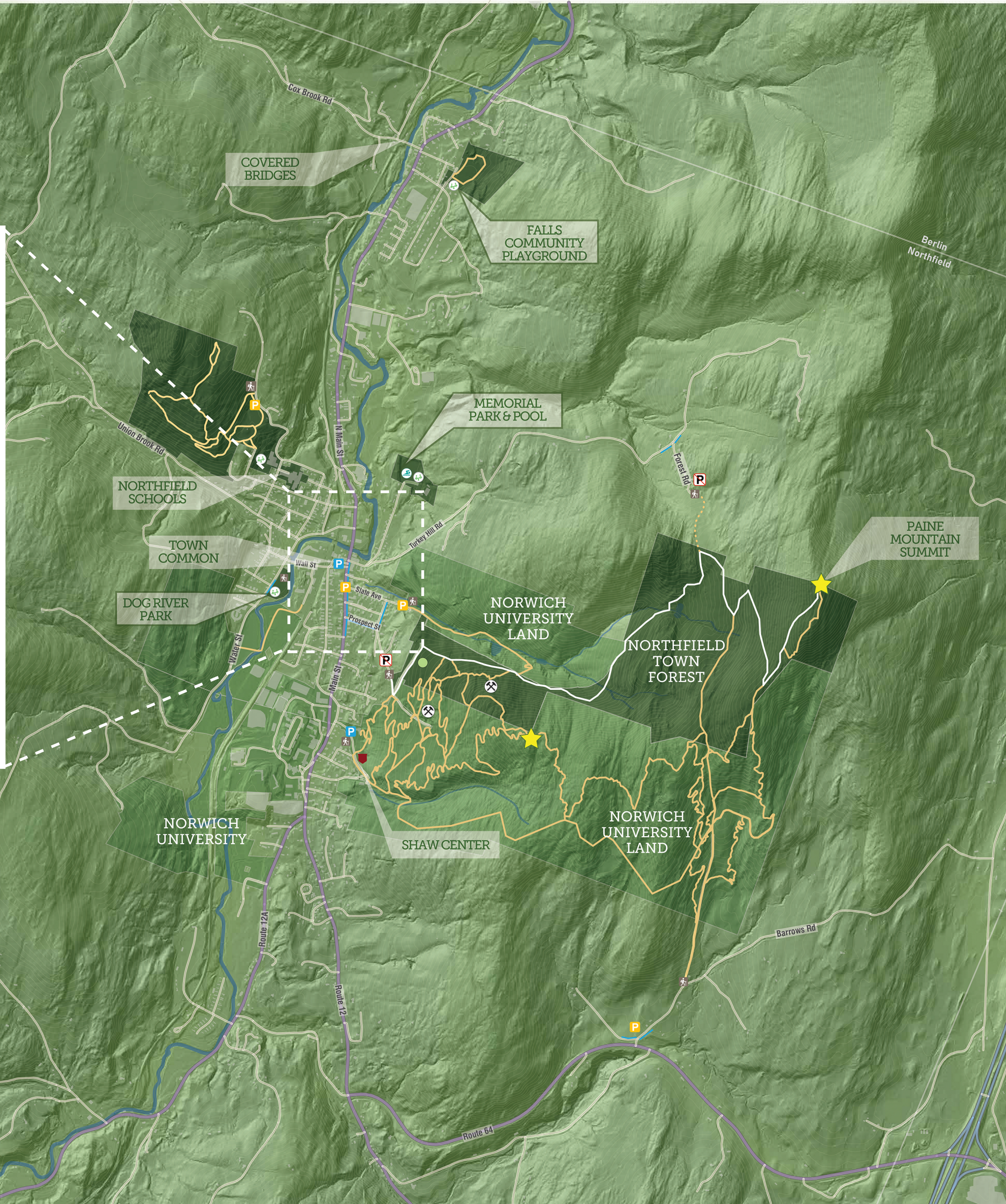
*Denotes parking is limited. Library parking is off-hours.



VISITOR INFORMATION

Welcome to the Northfield Town Forest and Norwich University trail systems; 1,700 acres of contiguous forest, open fields and wetlands. The forest encompasses 2 slate quarries and numerous springs, streams and ponds. The forest is managed for multiple uses including recreation, timber, water quality and wildlife habitat.

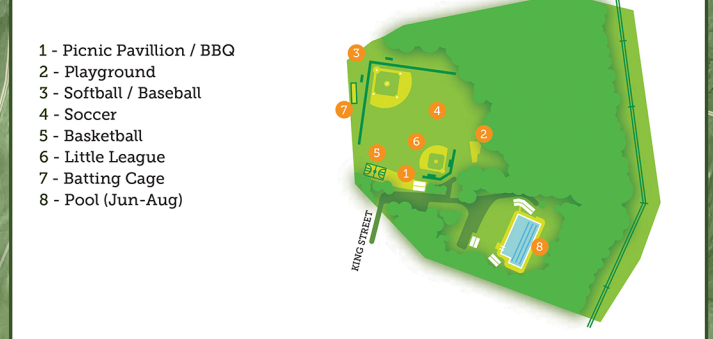
Trails are open to hiking, biking, snowshoeing and skiing with trails ranging from beginner to advanced. For more information on the forest's natural resources visit the town webpage.



FALLS COMMUNITY PLAYGROUND



MEMORIAL PARK & POOL



DOG RIVER PARK

